

Northfield Villa

ASSISTED LIVING SERVICES

Assisted Living..."Your life made easier."

Our Assisted Living community located in Gering Nebraska provides residents a relationship they can trust! Our residents are genuinely welcomed by their peers and employees alike. We often tell prospective residents to get ready to meet some of the best friends of their life. Our community is warm, welcoming and most of all, ready to make your life easier.



The Largest Apartments...

Our apartments are the largest in the region with all the amenities you are accustomed to. Each apartment has a full kitchen with a stove and refrigerator for entertaining. Each has a separate living and bedroom area. If that was not enough, each apartment has its own walk-out porch to enjoy warm summer days. Carpet is either replaced or professionally cleaned and walls are repainted. Your room will be clean, fresh and ready for you to move in and enjoy.

Assistance, but only when you need it...

Assisted living helps residence maintain their sense of independence. We encourage our residence to maintain their everyday activities, but we are available for the tasks that our residents are no longer able to complete. Our residents and their families feel safe knowing our friendly staff are available for assistance 24 hours a day.



Expect to Love it!...

Be prepared to thoroughly enjoy our Assisted Living community at Northfield Villa. You will meet residents and employees who will become some of the dearest friends in your life. Upon joining our Assisted Living community, residents thrive socially, emotionally, and spiritually. We have a resident who says *"you would really have to put forth a lot of effort to be unhappy here...because it's simply a great place with warm and caring people."* That is what you can expect at Northfield Retirement Communities –Assisted Living.



2550 21st Street
Gering, NE 69341

308-436-3101

www.northfieldretirement.net

Northfield Villa & Vista

HEALTH SERVICES

Health Care Center...

Unfortunately at times our residents may take a step back with their health conditions and may need the extra services in our Health Care Center. For any future increased medical needs, our certified, licensed Health Care Center, known as the Med Center is equipped with 41 beds.

Our goal is always to provide quality care in order that you may return to your own apartment as quickly as possible. You may continue using your own family physician or use our medical director who is on-call 24 hours a day.



We contract with Regional West Medical Center to bring you physical, occupational, and speech therapy to speed our residents to a strong recovery.

We accept Medicare, Medicaid, and Private Pay residents. Private Pay rates start at \$155 a day.



2550 21st Street
Gering, NE 69341

308-436-3101

www.northfieldretirement.net

Northfield Retirement Communities

QUESTIONS OUR NEW RESIDENTS MOST FREQUENTLY ASK

How often is my apartment cleaned?

Every other week.

Do I bring my own sheets and towels?

Please bring your own sheets for at least four bed changes. NRC provides clean bath and kitchen towel service, as well as biweekly laundry services for your bedding.

May I have my bedding changed for me?

Only if requested, and for a small fee.

Where do I put my dirty towels and my trash?

Separate dirty towel and trash containers may be found in each of the resident laundry rooms.

How is meal service handled?

Noon meals are served in the Villa and The Residency dining rooms. You may eat your evening meals in the Villa, the Vista or The Residency dining room. The same menu is served at both the noon and evening meals. Dress is casual; however, on Sundays, some men choose to wear suits.

May guests dine with me?

Yes. We encourage you to invite guests whenever possible. Please notify the office in advance when you intend to entertain guests. If you plan to entertain more than two guests for a meal, please notify the office at least 24 hours in advance. Charges for guest meals will be added to your monthly statement.

May I get assistance to hang pictures, curtains, or move things in my apartment?

Our staff is available to assist you with many of these types of services.

What kinds of social activities are available?

We have weekly game nights (cards, bingo, etc.). There are various small card groups as well. Many other activities are scheduled throughout the year. Please watch the bulletin boards, resident newsletters, and note the daily announcements made at the dinner hour for up-to-date information on current resident activities.

Villa & Vista
2550 21st Street
Gering, NE 69341

308-436-3101



www.northfieldretirement.net

The Residency
2100 Circle Drive
Scottsbluff, NE 69361

308-632-4342

Is transportation provided to different locations in town?

Yes. Transportation is provided to all medical offices, some grocery stores, and to Monument Mall on a regular basis. Sign-up sheets noting scheduled times are located at the office. Periodically, transportation is provided to various activities in the community. Please watch the bulletin boards for times and locations.

How and where do I pay my monthly bill?

You may pay your monthly bill at the office. If you desire, electronic funds transfer may be arranged with your bank to make direct payment of your bill.

How often will my monthly fee change?

Our fiscal year is from May 1 to April 30. This is usually when a change may happen. However, the Board of Directors of Northfield Retirement Communities reserves the right to change or increase the service fee if economic conditions make it necessary to do so. Written notification of a change in rates will be made at least 30 days prior to the effective date of the change.

How do I qualify for Life Care?

We require a financial information sheet to be filled out, as well as a physician's report and examination sheet. We then make arrangements with you for a home visit with members of our acuity assessment team.

Why do I need to give financial information?

All prospective residents will be requested to demonstrate financial ability to meet ongoing monthly fees in addition to the entrance fee. A third-party guaranty will be required if such financial ability is not adequately demonstrated.

Do I hand over all my assets to you?

No. We do ask for a financial statement. You pay the entrance fee and your monthly fee.

What if I run out of money?

If you do, we have benevolence available. If you are in the Health Care Center, you may apply for Medicaid.

Is there any type of refund?

We have a 25-month prorated refund schedule. If a resident passes away or decides to move out, the resident or their estate will receive a refund. Refunds begin at 75% at one month. For the second person, there is a 26-week prorated refund on the \$15,000 second occupant entrance fee. Refund schedules are included in the sample occupancy agreement.

Are there extra storage areas and/or garages available?

Additional storage space is located in the basements of the Villa and The Residency. At the Vista, storage compartments are located in the laundry rooms. Garages may not be immediately available. Please contact the office for more details about having your name placed on the garage waiting list.

When do I get my keys?

When you sign your Occupancy Agreement.

What if I need nursing care?

If your health needs change and nursing care is requested, you may be assured to know that our Health Care Centers are right on site. After a period of restorative or recuperative care, many residents return to their apartments. Residents may receive Assistance in Living care right in their own apartments (or when “Assisted Living” becomes available).

What if I have a medical emergency?

You may use the Care Alert pendant that you are issued to notify staff of your emergency.

How are medications handled?

Our nurses are available to create an individualized plan of service for you.

What other health and wellness services are available?

We have monthly health care days and an annual mini health. Please watch the bulletin boards, monthly newsletters, and note the daily announcements for information regarding other health, fitness, and wellness programs provided.

Where may I get my hair done?

Right here. Please feel free to call or visit either the Villa or The Residency beauty shops for a shampoo, haircut, or styling. You may ask the stylists about their charges.

May I have my own telephone?

Wiring for telephones is provided in all apartments.

Villa & Vista: The Office personnel can have your telephone activated providing your choice is ALLO. If you chose to keep your current carrier and telephone number please notify the telephone company to have your phone activated before you move in! You will receive your monthly phone bills directly from the phone company only when keeping your current carrier such as Embarq otherwise you will be billed by our billing department on your monthly statement.

The Residency: The office personnel can automatically activate your telephone. You will be billed for your monthly phone service on your Residency fee statement.

Are cable television hook-ups available?

Yes. We provide expanded basic service.

What services are *not* provided in my monthly fee?

You may refer to our current fee schedules to determine which additional services and accommodations (including guest meals and guest apartments) are billed separately.

How do I dispose of my moving boxes and cartons?

Please place them in the corridor outside your apartment door and then give the office a call. Our staff will dispose of them for you.

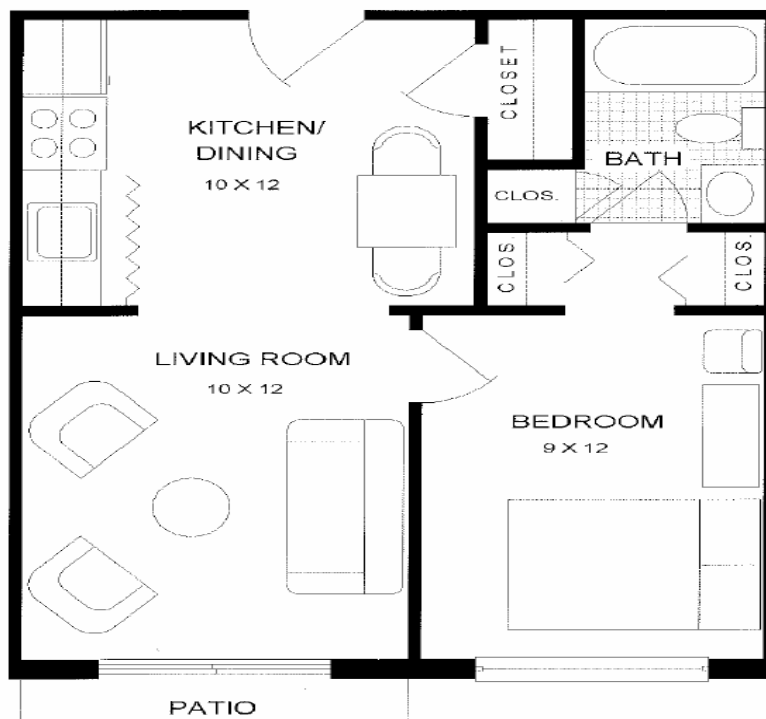
Who should I call if I have more questions?

Please ask any one of our staff members. You may wish to start by calling the office receptionist. Your happiness and comfort are our utmost concern!

Northfield Villa & Vista

Studio/Bedroom

470 square feet



MEASUREMENTS ARE APPROXIMATE. SLIGHT VARIATIONS MAY OCCUR.



2550 21st Street
Gering, NE 69341

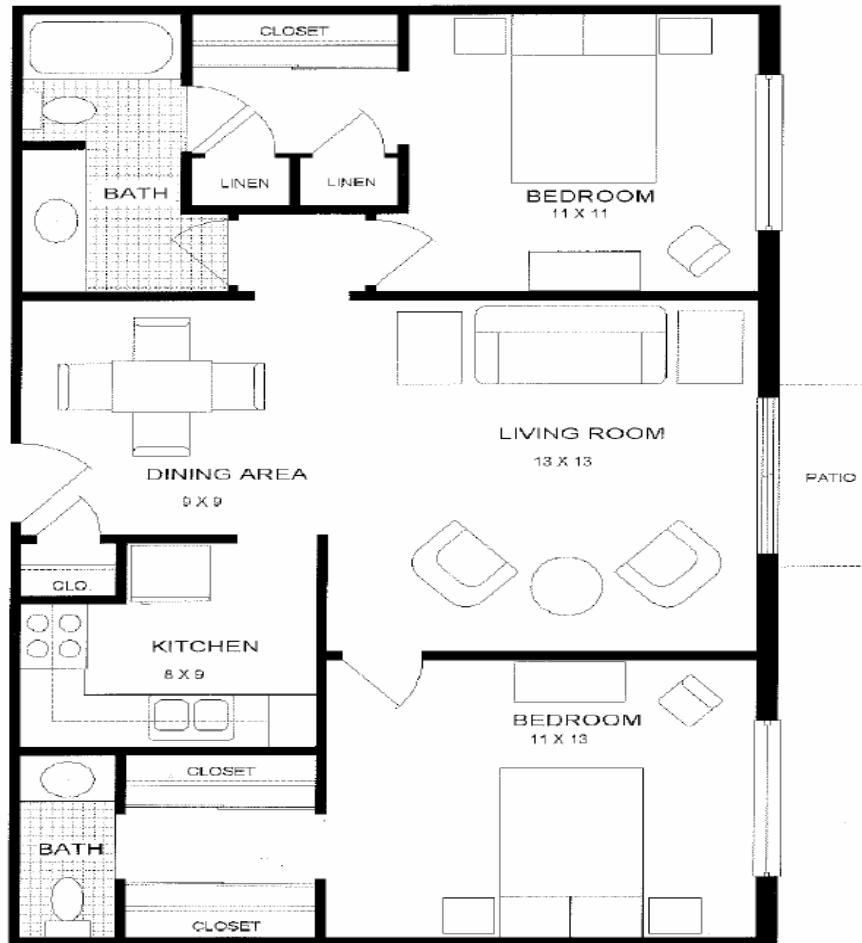
308-436-3101

www.northfieldretirement.net

Northfield Villa & Vista

Two Bedroom

850 square feet



Measurements are approximate. Slight variations may occur.



2550 21st Street
Gering, NE 69341

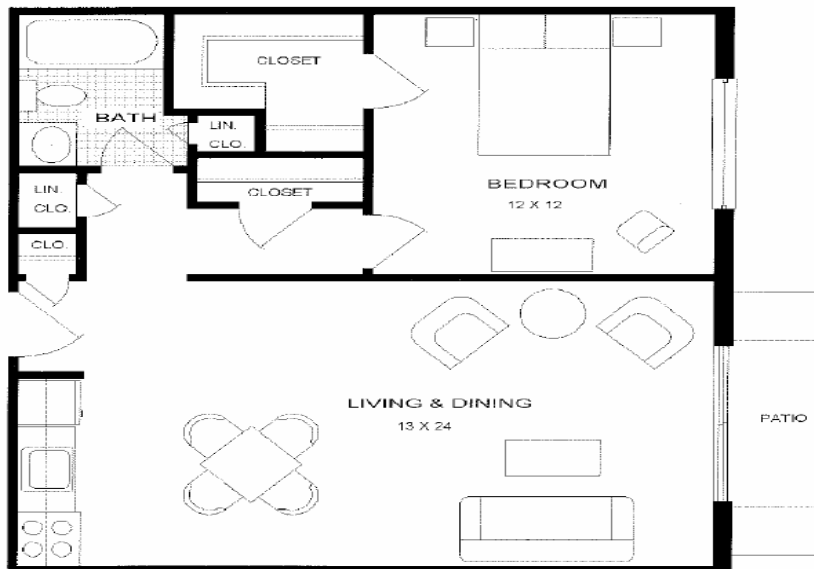
308-436-3101

www.northfieldretirement.net

Northfield Villa & Vista

One Bedroom

611 square feet



Measurements are approximate. Slight variations may occur.



2550 21st Street
Gering, NE 69341

308-436-3101

www.northfieldretirement.net



Northfield Retirement Communities

PRIVATE PAY ASSISTED LIVING

Advance Monthly Fees

(Effective July 1, 2011)

Apartment Size	Basic Fee
One Bedroom (470 sf)	\$3,215.00
One Bedroom Deluxe (611 sf)	\$3,475.00
Two Bedroom (850 sf)	\$3,740.00
Two Bedroom (1,050 sf)	\$4,005.00
Two Bedroom (1,450 sf)	\$4,510.00
Second Person (all apt. sizes)	\$1,595.00

EXHIBIT A

Updated May 4, 2010

SERVICES PROVIDED AS PART OF THE BASIC FEE

The fee for basic services is \$ _____ per month for the services identified on this Exhibit A. The Basic Fee is charged from the day the Resident occupies through the day the Resident or Responsible Person removes all the Residents personal property. Additional goods and services that are available to you for additional charges are found on Exhibit B. The Facility may provide additional goods or services based on the Residents needs or requests. The Facility reserves the right to change the charges for the basic rate or the goods and services.

24 hour on duty team members

Emergency call system

Three meals per day plus availability of snacks – private pay only

One meal included, charges for additional meals – Lifecare contract

Temporary tray service to apartment during illness

Laundry services: Facility will provide weekly laundry service for bedding. The

____ Facility or ____ Resident will launder Residents personal items of clothing (please check one). If Facility does the personal laundry, there is an additional charge

Bi-weekly housekeeping services

Change of bed linen weekly

Short term illness support services

Cueing for orientation

Monthly wellness services & monitoring such as blood pressure, pulse, and weight check

Communication with physician on the residents behalf

Assist with dressing and grooming

Pharmacy consulting

Set up weekly medications

1 whirlpool or assisted shower weekly

Restorative program as needed

Planned social activities with reminders

Transportation for shopping and medical appointments

Building and grounds maintenance, garbage service and pest control

Building security

All utilities, including basic cable television

Access to beauty/barber shop

Use of all common areas

Referral to other health care services as needed

Social Services available

Refer to Exhibit B or Exhibit C for services offered at an additional fee

Exhibit C

Updated May 4, 2010

I request the following services over and above my basic assisted living services to be provided by the facility. Changes in this Plan of Care can be made with my initials and date only.

Monthly Cost Private Pay	Monthly Cost Life Care	Service by Northfield Retirement Communities	Start Date	End Date	Resident Initials	Staff Initials
\$100.00	0	Blood glucose monitoring as ordered by physician				
\$100.00	0	Routine dose insulin injection (no sliding scale)				
\$30.00	0	Facility team members may assist resident in opening and reading mail				
		Personal laundry one ___ or two ___ times per week \$10.00 each time				
		Additional whirlpools or showers X ___ times per week \$25.00/ each				
\$300.00	0	Administer daily medications				
\$40.00	0	Bed making daily				
\$60.00	0	Oxygen care and nebulizer treatment				
\$25.00	0	Pacemaker checks				
\$50.00	0	Oxygen monitoring and administration				
\$100.00	0	Daily housekeeping of bathroom				
\$200.00	0	Ongoing orientation monitoring & supervision (SCU)				
\$65.00	\$65.00	Weekly housekeeping				

Medication Administration:

The person(s) responsible for providing medications for this resident is ___ resident ___ family or ___ facility.

The person(s) responsible for monitoring the actions and side effects of medications and reporting changes to a health care professional for this resident is ___ resident ___ family or ___ facility.

___ I am administrating medications to myself, I understand and agree to keep all medications secure in a locked environment according to policy.

___ I also agree to provide a list of all medications, supplements etc. that I take upon move in and at least annually/per policy.

_____ I agree to an evaluation for the self-administration of medications.

Resident or Responsible Party Signature

Date

Facility Representative Signature

Date